



Welcome to our

# **Sixth Form Open Evening**

Thursday 17th October



Welcome:

Hannah & Benedict (year 13)



Introduction:

Mr Hildrew, Headteacher



Ms Sheppard,  
Head of Sixth Form





1. About us
2. Academic Curriculum
3. Wider-curriculum
4. Progression
5. This evening



We are part of the Lighthouse Schools Partnership



# LIGHTHOUSE SCHOOLS PARTNERSHIP

A mature partnership dedicated to the flourishing of our pupils,  
our colleagues and our whole community.

With nearly 1000 Post-16 pupils across our Trust we work together to **offer you more** including:

- Student Voice and leadership events and networks
- More tailored Post-18 destinations support
- Academic enrichment
- Extra-curricular opportunities



# 1. About Us



Three Level 3 courses, plus one extension programme (Core Maths, EPQ, Study Skills)

A Specialist Tutor, a Head of Year and a Head of Sixth Form to support you academically and pastorally

A comprehensive Careers curriculum alongside independent advice and careers guidance from a specialist to help prepare you for your next steps

A large wider curriculum offer including volunteering opportunities, work experience, sports and leadership







## 2. Academic Curriculum

- 3 (or 4) Level 3 courses (A-Levels, BTEC/CTECs, AAQs\*)
- 1 extension study: EPQ, Core Maths or Study Skills
  - Morning registration
  - Specialist Tutor Time
  - Private study and super-curricular learning



\*pending government review

KINDNESS      CURIOSITY      DETERMINATION

The logo for Churchill Academy & Sixth Form features a stylized, multi-colored shape composed of overlapping curved lines in yellow, green, blue, and purple, resembling a flower or a modern architectural element.

# Churchill Academy & Sixth Form

Applied Science  
Art & Design  
Art Textiles  
Biology  
Business Studies  
Chemistry  
Criminology  
Design Technology  
Economics  
English Language  
English Literature

Food Science  
French  
Further Maths  
Geography  
Government & Politics  
Health & Social Care  
History  
IT  
Law  
Mathematics  
Media Studies  
Music  
Music Technology

Performing Arts  
Philosophy & Ethics  
Photography  
Physical Education  
Physics  
Psychology  
Sociology  
Spanish  
EPQ  
Core Maths  
Study Skills



## 2. Academic Curriculum - Entry Criteria



3 GCSEs grade 5 + 2 GCSEs grade 4.

Subject specific entrance criteria - found on the website.

GCSE English and Maths at grade 4 are not essential but you will need to re-take in Year 12 if you do not achieve them in Year 11.



KINDNESS

CURIOSITY

DETERMINATION

# Extension Study

As part of your Year 12 Curriculum, you will choose an 'Extension Study' option in addition to your A levels. There are four options to choose from. We will discuss your choice with you during your interview to check you have made the right one for you.

	Extended Project Qualification	Core Maths	Study Skills	A 4th subject at AS Level
What is it?	An independent project of 5000 words or an 'artefact' and a 1000 word essay. It includes the creation of a detailed journal and a presentation to peers at the end.	Taught Maths lessons on functional maths rather than theoretical maths. This develops the use of maths skills for contexts.	A lesson of taught study skills and a lesson of supervised study.	Another subject, see prospectus for choices.
Hours per fortnight	3	4	2	9
Exam board	AQA	AQA	None	Various but not available in all subjects, check the prospectus for details.
Qualification	50% of an A Level (UCAS points depend upon the grade achieved)	40% of an A Level (UCAS points depend upon the grade achieved)	None	40% of an A Level (UCAS points depend upon the grade achieved)
Purpose	To develop skills that help prepare students for Year 13, undergraduate study and the workplace.  To develop an independent enquiry in an area of particular interest.	To continue with Level 3 maths, appealing to employers and undergraduate study providers.  To support students who take other subjects that include Maths, such as Business Studies, Psychology or Geography.	To help students learn the essentials in study as they step up from GCSE to A levels. A levels have deeper content and a Sixth Former is expected to be a more independent learner and self-manager.	To increase the breadth of study beyond three subjects in Year 12, allowing students who are uncertain on their Year 13 curriculum some further time to study a broader programme.

## Your 'Extension Study' Option

In Year 12 you choose one of four options to develop your skills.

Each option has different benefits.

Some are qualifications.

We will discuss this further in your interview.

For more information on Core Maths and EPQ, please go to the talks at 6.30pm or 7.30pm

## 2. Academic Curriculum - how to choose!



Speak to teachers & students this evening to get a better understanding of the courses on offer

What do you enjoy the most?

What do you want to do after Sixth Form?



KINDNESS

CURIOSITY

DETERMINATION

# 3. Wider Curriculum

## Specialist Tutor Programme



KINDNESS

CURIOSITY

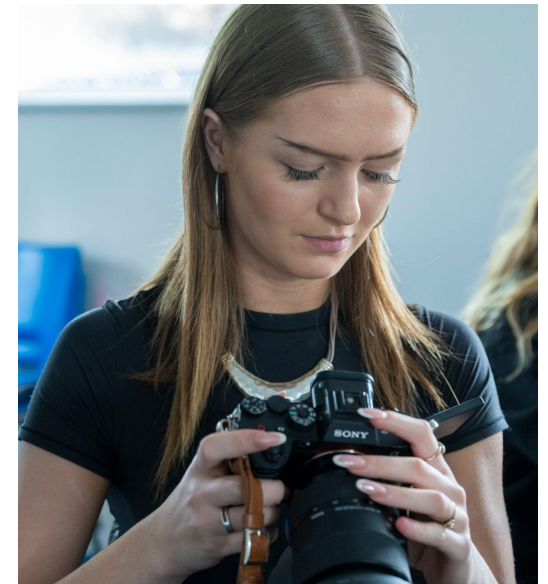
DETERMINATION

# 3. Wider Curriculum - STP



Business, IT, Law and Economics
Creative/Food/D&T
Performance
STEM
Social Sciences
Humanities and the World
Veterinary, Medicine, Dentistry
Composition, Creative Writing and Performance

- Super-curricular learning
- Visiting speakers and workshops
- Personal development and life skills
- Universities, apprenticeships, employers



KINDNESS

CURIOSITY

DETERMINATION



# 3. Wider Curriculum

Specialist Tutor Programme

Assembly - PSHE

Impact Groups

WEX/Volunteering

Sports



KINDNESS

CURIOSITY

DETERMINATION



	1Mon	1Tue	1Wed	1Thu	1Fri	2Mon	2Tue	2Wed	2Thu	2Fri
Morning Registration (8.35-9.00)										
Period 1		Sociology	Law	Law	Law	Core Maths		Psychology	Law	Law
Period 2	Sociology	Law	Psychology	STP			Law			Psychology
Break time (11.00-11.20)										
Period 3		Psychology	Sociology		Psychology	Psychology	Sociology	Sociology		
Period 4	Psychology	Core Maths		Sociology	Sociology	Law	Psychology	Psychology	Psychology	Sociology
Lunchtime (1.20-2.05)										
Period 5	Core Maths				Law		Sociology		Core Maths	

	1Mon	1Tue	1Wed	1Thu	1Fri	2Mon	2Tue	2Wed	2Thu	2Fri
Morning Registration (8.35-9.00)										
Period 1		Sociology	Law	Law	Law	Core Maths		Psychology	Law	Law
Period 2	Sociology	Law	Psychology	STP			Law			Psychology
Break time (11.00-11.20)										
Period 3	Assembly	Psychology	Sociology		Psychology	Psychology	Sociology	Sociology		
Period 4	Psychology	Core Maths		Sociology	Sociology	Law	Psychology	Psychology	Psychology	Sociology
Lunchtime (1.20-2.05)										
Period 5	Core Maths		PE		Law		Sociology	PE	Core Maths	

	1Mon	1Tue	1Wed	1Thu	1Fri	2Mon	2Tue	2Wed	2Thu	2Fri
Morning Registration (8.35-9.00)										
Period 1		Sociology	Law	Law	Law	Core Maths		Psychology	Law	Law
Period 2	Sociology	Law	Psychology	STP			Law			Psychology
Break time (11.00-11.20)										
Period 3	Assembly	Psychology	Sociology		Psychology	Psychology	Sociology	Sociology		
Period 4	Psychology	Core Maths		Sociology	Sociology	Law	Psychology	Psychology	Psychology	Sociology
Lunchtime (1.20-2.05)										
Period 5	Core Maths		PE		Law		Sociology	PE	Core Maths	



KINDNESS

CURIOSITY

DETERMINATION

# 4. Progression

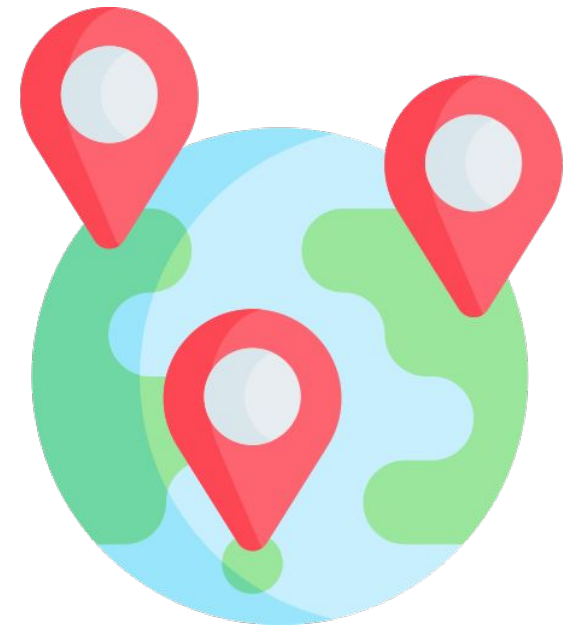


STP & Careers Guidance - Career Readiness.

62% of our class of 2024 went to University  
29% of these students went to a Russell Group  
University

20% started an apprenticeship or employment

13% are taking a gap year before applying to  
University



KINDNESS

CURIOSITY

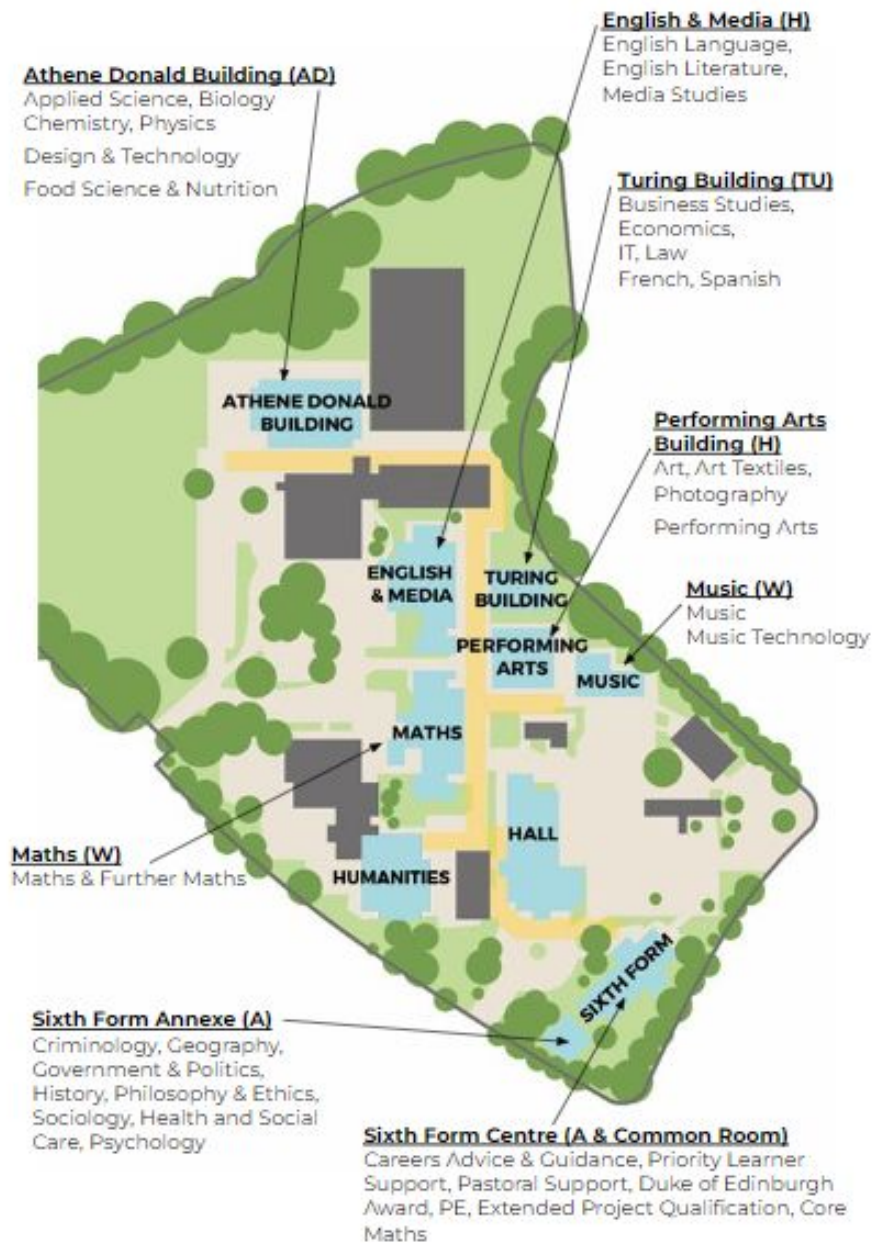
DETERMINATION

# 5. This Evening



6.00	Head of Sixth Form and Headteacher presentation	Hall
6.30	Core Maths talk EPQ talk	A1 A2
7.00	Head of Sixth Form and Headteacher presentation (repeat)	Hall
7.30	Core Maths talk (repeat) EPQ talk (repeat)	A1 A2
	Student Council, Careers advice and guidance, Duke of Edinburgh, Priority Learner Support and Sixth Form Pastoral Leaders	Sixth Form Common Room





Subject	Building	Room
Applied Science	Athene Donald Building	AD1
Art	Performing Arts	H15
Art Textiles	Performing Arts	H15
Biology	Athene Donald Building	AD11
Business Studies	Turing Building	TU4
Chemistry	Athene Donald Building	AD1
Core Maths	Sixth Form	A1
Criminology	Sixth Form Annexe	A9
Design & Technology	Athene Donald Building	AD16
Economics	Turing Building	TU4
English Language	English & Media	H2
English Literature	English & Media	H2
Extended Project Qualification (EPQ)	Sixth Form	A2
Food Science & Nutrition	Athene Donald Building	AD14
French	Turing Building	TU3
Further Maths	Maths	W11
Geography	Sixth Form Annexe	A6
Government & Politics	Sixth Form Annexe	A8
Health & Social Care	Sixth Form Annexe	A7
History	Sixth Form Annexe	A8
IT	Turing Building	TU1
Law	Turing Building	TU4
Maths	Maths	W11
Media Studies	English & Media	H4
Music	Music	W18
Music Technology	Music	W17 & Recording Studio
Performing Arts	Performing Arts	H16&17
Philosophy & Ethics	Sixth Form Annexe	A9
Photography	Performing Arts	H15
Physical Education	Sixth Form	A5
Physics	Athene Donald Building	AD6
Psychology	Sixth Form Annex	A7
Sociology	Sixth Form Annexe	A9
Spanish	Turing Building	Tu3
Wider Curriculum and Support		
Catering	Sixth Form	Common Room

KINDNESS

CURIOSITY

DETERMINATION



Scan me to go to the subject information pages or visit [www.churchill-academy.org/  
Sixth-Form-Subject-List](http://www.churchill-academy.org/Sixth-Form-Subject-List)

---

Scan me to find out more about Sixth Form and to apply online or visit [www.churchill-academy.org/  
Sixth-Form/Apply-to-the-Sixth-Form](http://www.churchill-academy.org/Sixth-Form/Apply-to-the-Sixth-Form)



For any further queries and feedback on the evening, please email:  
[sixthform@churchill-academy.org](mailto:sixthform@churchill-academy.org)



Thank you for listening.

Enjoy the rest of your evening!

If you have any feedback after the evening, please email:  
[sixthform@churchill-academy.org](mailto:sixthform@churchill-academy.org)

